

# ContiClassic® Artificial Urinary Sphincter

ContiClassic® Artificial Urinary Sphincter is used to treat urinary incontinence due to intrinsic sphincter deficiency in cases such as incontinence following prostate surgery.<sup>1</sup>

## Key Features & Benefits

ContiClassic® Artificial Urinary Sphincter is designed with years of experience in urology and with one thing in mind; an innovative device that offers safety and effectiveness for you and your patients.

### ♂ Diverse Occlusive Cuff Size Options for a Better Fit (3.75 cm - 4.25 cm - 4.75 cm)<sup>1</sup>

ContiClassic® Artificial Urinary Sphincter is offered with a diverse size of occlusive cuffs for surgeon-made fit to the patient's urethral anatomy.

### ♂ HydroShield™ Coating<sup>1</sup>

ContiClassic® Artificial Urinary Sphincter incorporates a hydrophilic coating on all external component surfaces. The hydrophilic coating offers you the freedom to choose the aqueous solution for dipping.

Hydrophilic coating facilitates the rapid and strong absorption of the solution on the device.

### ♂ EasyClick™ Connector & EasyClick™ Y-Connectors

EasyClick™ Connectors do not require an additional assembly tool. EasyClick™ Y-Connector enables double-cuff placement.

### ♂ Simultaneous use with Infla10® IPP

For Urinary Incontinence patients also suffering from Erectile Dysfunction, ContiClassic® AUS can be used in combination with the Infla10® Inflatable Penile Prosthesis models.<sup>2</sup>



**Rigicon®**  
American Urological Solutions

# ContiClassic®

## Artificial Urinary Sphincter

Product Code	ContiClassic® Pressure Regulating Balloon
CTC-PRB49	40 – 49 cm H <sub>2</sub> O
CTC-PRB59	50 – 59 cm H <sub>2</sub> O
CTC-PRB69	60 – 69 cm H <sub>2</sub> O
CTC-PRB79	70 – 79 cm H <sub>2</sub> O
CTC-PRB89	80 – 89 cm H <sub>2</sub> O

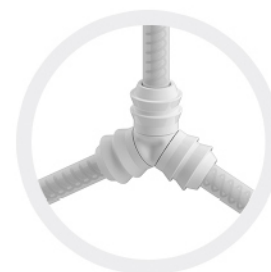
Product Code	ContiRegular® Occlusive Cuff (cm)
CTR-OC35	3.5
CTR-OC375	3.75
CTR-OC40	4.0
CTR-OC425	4.25
CTR-OC45	4.5
CTR-OC475	4.75
CTR-OC50	5.0
CTR-OC55	5.5
CTR-OC60	6.0

Product Code	Control Pump
CTC-CP	ContiClassic® Control Pump

Product Code	Accessory Kit
CT-AK	Conti® Accessory Kit



EasyClick™ Connector



EasyClick™ Y-connector

#### References:

1. Rigicon® Conti® Artificial Urinary Sphincter Instructions for Use.
2. Boysen, William et al. "Combined Placement of Artificial Urinary Sphincter and Inflatable Penile Prosthesis Does Not Increase Risk of Perioperative Complications or Impact Long-term Device Survival." Urology vol. 124 (2019): 264-270.

Caution: Federal Law (U.S.) restricts this device to sale by or on the order of a physician.

Prior to use, please review the Instructions for Use for a complete listing of indications, contraindications, warnings, precautions and potential adverse events.

Indications for Use: Conti Artificial Urinary Sphincter Systems are used to treat urinary incontinence due to intrinsic sphincter deficiency in cases such as incontinence following prostate surgery.

Warnings: Patients with urinary tract infections, diabetes, spinal cord injuries, open sores or regional skin infections may have increased risk of infection associated with a prosthesis. Erosion may be caused by infection, pressure on the tissue, improper cuff sizing, improper balloon selection, tissue damage, and component misplacement. Patients with urge incontinence, overflow incontinence, detrusor hyperreflexia or bladder instability should have these conditions treated and controlled (or resolved) prior to implantation of the device. Surgical, physical, psychological, or mechanical complications, if they occur, may necessitate revision or removal of the prosthesis.

Potential Adverse Events: May include device malfunction/failure leading to additional surgery, device/tissue erosion through urethra/bladder/scrotum, urinary retention, infection, and pain/soresness.

Rigicon, Inc.  
2805 Veterans Memorial Highway Suite 13, Ronkonkoma, NY 11779 United States of America  
+1 (888) 202-9790 - www.rigicon.com

**UK and ROI Distributors - [www.iMEDicare.co.uk](http://www.iMEDicare.co.uk)**

**Rigicon®**  
American Urological Solutions