

SOMACorrect™



CONTENTS

One piece, ultra-ease pumping mechanism on pump head with simple twist-lock attachment to outer cylinder (C). Concentric cylinder inserts, (A) and (B), and cushioned inserts. Travel case, instruction manual and 142g tube of lubricant included.

£259 + P&P

100% refund within 90 days.
One year warranty.

SOMACorrect™

Peyronie's Correction Therapy

SIZE TO FIT (STF)



UK and Republic of Ireland Distributor

iMEDicare Ltd
Unit 11
Shakespeare Industrial Estate
Shakespeare Street
Watford WD24 5RR



01923 237795



info@mypelvichealth.co.uk

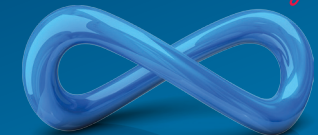


SCAN ME

Author	Participants	Method	Findings
Benny Verheyden	N=12	20 erections per day 6 months	50% reduction in curvature 10/12 satisfied with treatment
Chitale + Sethia	N=26	20 erections per day 6 months	Min of 47% reduction in curvature in 80% of patients
Hilmy et al	N=68 Ongoing	20 erections per day 6 months	49% improvement in curvature, 48% able to have penetrative intercourse
Alkhalay et al	N=20	20 erections per day 6 months	80% showed noticeable improvements
Burge et al	N=42	20 erections per day 6 months	71% of patients improved curve

1. Yousif A, Natale C, Hellstrom WJG. Conservative Therapy for Peyronie's Disease: a Contemporary Review of the Literature. Curr Urol Rep. 2021 Jan 8;22(2):6.
2. Raheem AA, Garaffa G, Raheem TA et al. The role of vacuum pump therapy to mechanically straighten the penis in Peyronie's disease. BJU Int. 2010;106:1178-80.

iMEDicare
Pelvic Health Naturally...



MyPelvicHealth.co.uk

SOMACorrect™

Peyronie's
Correction Therapy

HOW DOES IT WORK?

SOMACorrect Peyronie's Correction Therapy is the revolutionary **NEW** treatment regimen for men with the penile curvature (and possible erectile dysfunction) associated with Peyronie's disease.

This condition, which affects up to 3% of men, involves the spontaneous formation of scar tissue (sometimes painful) or a hardened plaque on the penile erectile tissue.

When severe enough this can lead to significant penile deformity or curvature. While the plaque itself is benign (harmless) – it can cause a great deal of distress if the level of penile curvature is sufficient to interfere with normal sexual intercourse.

By placing the penis in one of the appropriate size adapted circumferential cylinders and using vacuum therapy pressure to forcibly induce a series of 'straight' erections over a 15-20 minute period each day for up to 26 weeks – this increased blood flow and 'stretch' of the scar tissue plaque can eventually lead to a reduction in penile curvature and an improvement in erectile health and function in most cases.

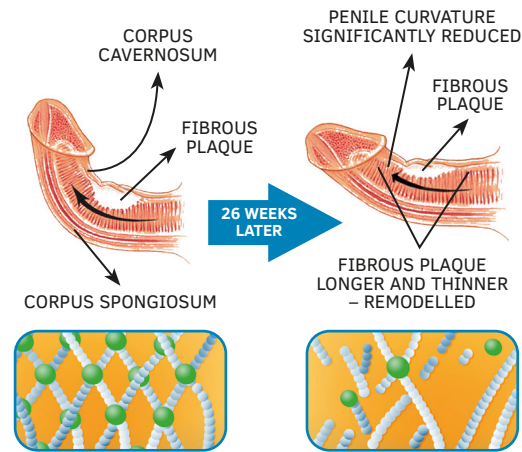
Note that currently, SOMACorrect is not available on NHS prescription.



SIZE TO FIT (STF)

	Effective Length (mm)	Internal Aperture – minus insert (mm)
A	203.2	37
B	203.2	44
C	203.2	56
XL	203.2	63
XLL	274.9	63

SOMACORRECT PEYRONIE'S CORRECTION THERAPY

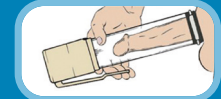


EASY TO USE

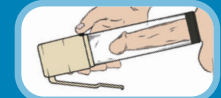
STEP 1



STEP 2



STEP 3



MECHANISM OF ACTION?

Regular stretching and straightening may burst an element of the collagen fibres that make up the scar tissue (plaque area) and help to **(A) 'reshape'** the plaque thereby reducing its contractile impact (degree of mechanical distortion) and the degree of penile curvature. It is theorised that regular SOMACorrect may cause **(B) partial fragmentation** of the plaque itself (particularly when diffuse in nature) with some element of plaque **(C) surface reabsorption** and an **(D) increase in vascularization** of plaque tissue. **(E) Early treatment of associated erectile dysfunction (ED)** in relevant patients may be of benefit. Possibly, mechanical tissue expansion principles of action with subsequent stimulated **(F) cell (tissue) proliferation** may also apply with regular SOMACorrect application increasing tissue mass on the interior curved side of the penis.

Force + time = GROWTH

Tissue expansion: sustained mechanical stress including increased biosynthetic activity of the shorter side as it is subject greater traction. A high degree of calcification may reduce the pliability and scope for revascularization of plaque tissue – therefore vacuum therapy application is particularly indicated during the active phase of Peyronie's disease and certainly pre-calcification if possible, although response rates may be influenced by plaque location, shape, size, patient's potential for stimulated cell proliferation and compliance in procedural use, and possible discomfort.

In some cases, a vacuum induced erection captured with an erection maintenance ring is artificially less curved in light of the extra-corporal filling effect so long as the ring is held in place.