

# SOMACorrect™



## Peyronie's Correction Therapy

### SIZE TO FIT (STF)

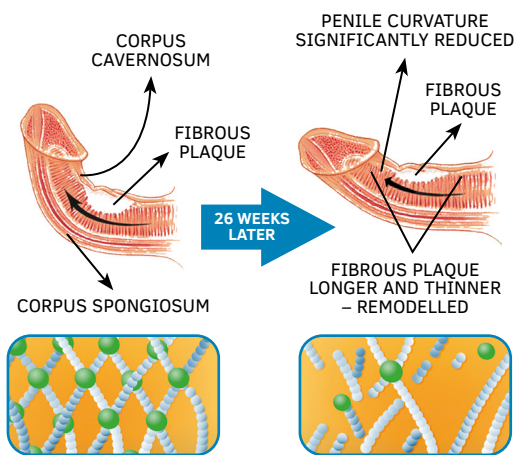


	Effective Length (mm)	Internal Aperture – minus insert (mm)
A	203.2	37
B	203.2	44
C	203.2	56
XL	203.2	63
XLL	274.9	63



**SOMACorrect** (Peyronie's Disease Management) vacuum erection device is indicated for the reduction of mild to moderate penile curvature both in the stable phase when the patient wishes to avoid or is not suitable for surgical intervention and the plaque tissue has not calcified. The treatment involves placing the penis in one of the 3 appropriate concentrically fitting 'sized to fit (Stf)' adapted circumferential cylinders (5 cylinder sizes available in total) and using vacuum therapy pressure to forcibly induce a series of 20 'straight' erections over a 5 to 10 minute interval daily for 6 months. This is thought to remodel the plaque shape by breaking down the bonds within and between the collagen fibres (triple helix) that constitute the major component of a NON-Calcified plaque. Considering the low morbidity and the non-invasive nature of vacuum devices, both the AUA and EAU guidelines suggest that it may be offered as part of a multi-modal therapy approach for reducing penile deformity (1-2).

### SOMACORRECT PEYRONIE'S CORRECTION THERAPY



Author	Participants	Method	Findings
Benny Verheyden	N=12	20 erections per day 6 months	50% reduction in curvature 10/12 satisfied with treatment
Chitole + Sethia	N=26	20 erections per day 6 months	Min of 47% reduction in curvature in 80% of patients
Hilmy et al	N=68 Ongoing	20 erections per day 6 months	49% improvement in curvature, 48% able to have penetrative intercourse
Alkhayal et al	N=20	20 erections per day 6 months	80% showed noticeable improvements
Burge et al	N=42	20 erections per day 6 months	71% of patients improved curve

1. Yousif A, Natale C, Hellstrom WJG. Conservative Therapy for Peyronie's Disease: a Contemporary Review of the Literature. *Curr Urol Rep.* 2021 Jan 8;22(2):6.
2. Raheem AA, Garaffa G, Raheem TA et al. The role of vacuum pump therapy to mechanically straighten the penis in Peyronie's disease. *BJU Int.* 2010;106:1178-80.

MyPelvicHealth.co.uk

**iMEDicare**  
*Pelvic Health Naturally...*



01923 237 795

info@mypelvichealth.co.uk